

Features:

- * Low profile insulator 1.50mm(0.059")
- * Available in both Single and Double row.
- * Available in Straight.
- * Dual insulators offer high versatility and strength.

Material:

Housing: 30% Glass filled PBT UL94V-0 for DIP Type.
High temperature housing withstands IR and VPR soldering methods For SMD Type.

Contacts: Brass.

Plating: Gold plated over nickel.
Tin plated over nickel.

Electrical Characteristics:

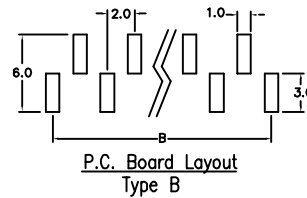
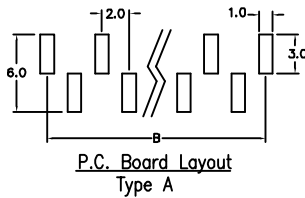
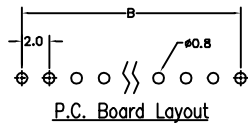
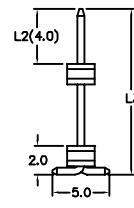
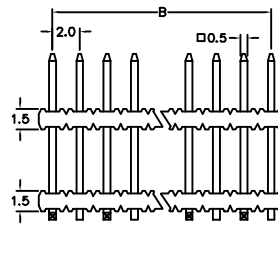
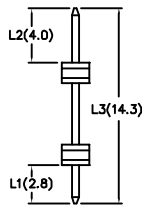
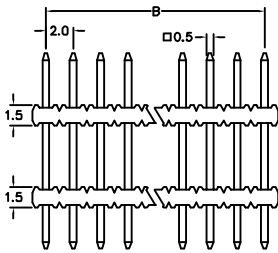
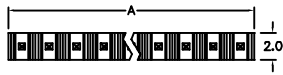
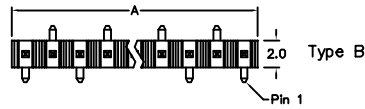
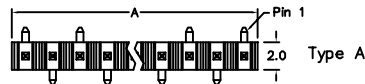
Current Rating: 1 AMP.

Insulator Resistance: 5000MΩmin. at DC 500V.

Contact Resistance: 20mΩmax. at DC 100mA.

Operating Temperature: -55°C~+105°CFor DIP Type.
-65°C ~+125°CFor SMD Type.

Max Processing Temperature: 230°C for 30~60 seconds.



Position	2 Thru 40
Dimension	
A	2.0 X No. of Positions
B	2.0 X No. of Positions -2.0

Ordering information

PH13- 1 40 1 1 A /L1 /L2 /L3
 Series 1: Single Row No. of 1: Gold Plated 1: Straight A: Type A Foot Print
 Pin Per Row 2: Tin Plated 3: S.M.D Type B: Type B Foot Print
 Custom Design: Straight (i.e. PH13-14011/L1 /L2 /L3)
 Surface mount (i.e. PH13-14013A/L2 /L3)